



Infant Health in Anne Arundel County

Anne Arundel County Department of Health

January 2011

Number of County Births by Race of Mother

| Year | Total | White | Black |
|------|-------|-------|-------|
| 2005 | 6,751 | 5,280 | 1,114 |
| 2006 | 7,102 | 5,529 | 1,169 |
| 2007 | 7,115 | 5,489 | 1,226 |
| 2008 | 7,156 | 5,456 | 1,270 |
| 2009 | 7,103 | 5,333 | 1,332 |

County Infant Mortality Rates by Race of Mother†

| Year | Total | White | Black |
|------|-------|-------|-------|
| 2005 | 5.5 | 4.7 | 8.1 |
| 2006 | 7.7 | 5.2 | 21.4 |
| 2007 | 6.5 | 5.6 | 9.8 |
| 2008 | 8.7 | 7.1 | 17.3 |
| 2009 | 4.9 | 4.1 | 9.0 |

Black Infant Mortality†

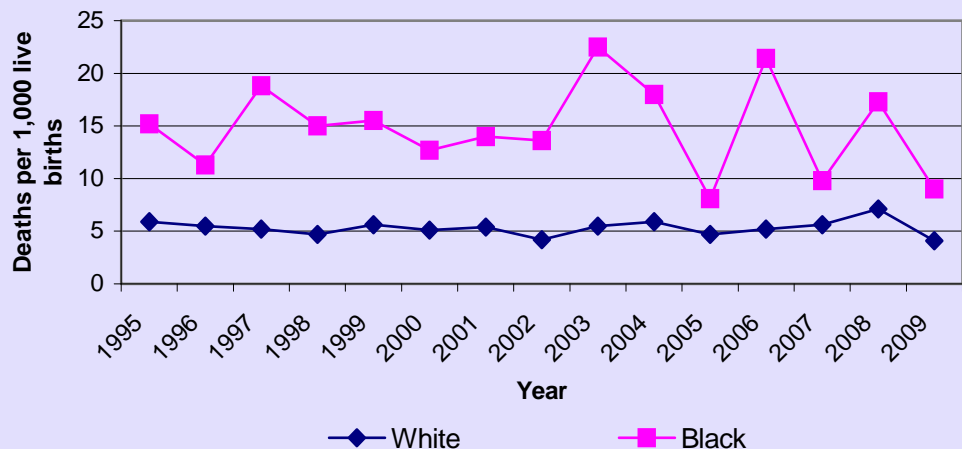
| Year | Anne Arundel | Maryland |
|------|--------------|----------|
| 2005 | 8.1 | 12.7 |
| 2006 | 21.4 | 12.7 |
| 2007 | 9.8 | 14.0 |
| 2008 | 17.3 | 13.4 |
| 2009 | 9.0 | 13.6 |

The health of infants (less than one year old) is reflective of the health and social systems a community has in place to support families and neighborhoods.

In Anne Arundel County, preterm birth and low birth weight continues to be the leading cause of death among infants. The health of the mother before pregnancy can have a profound impact on the health of her baby. Issues such as pre-pregnancy overweight and obesity, early initiation of prenatal care, chronic disease management, and substance abuse (including tobacco, alcohol and prescription drugs) continue to affect the health of babies born in the County.

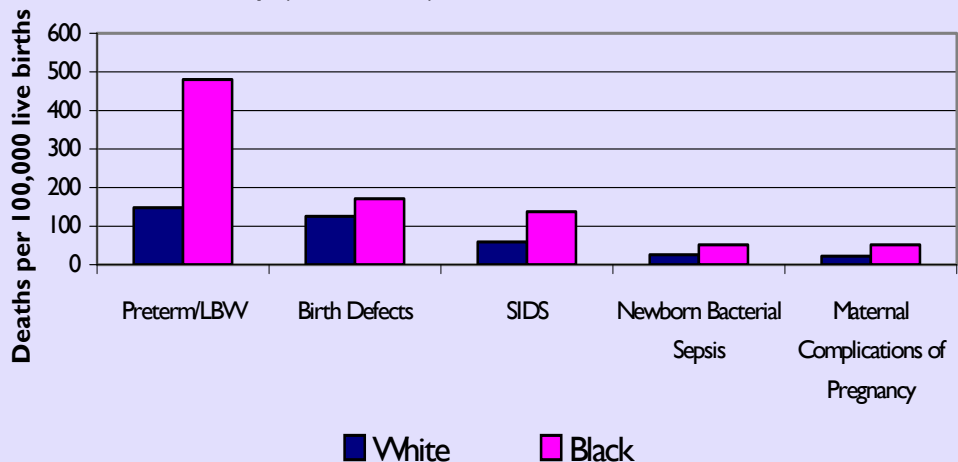
Infant Mortality Rates

Anne Arundel County (1995-2009)



Leading Causes of Infant Deaths by Race

Anne Arundel County (2004-2008)



3 Harry S. Truman Parkway
Annapolis, MD 21401
www.aahealth.org

Compiled by:
Jinlene Chan, M.D., M.P.H.
Donna Perkins, M.P.H.
410-222-7252

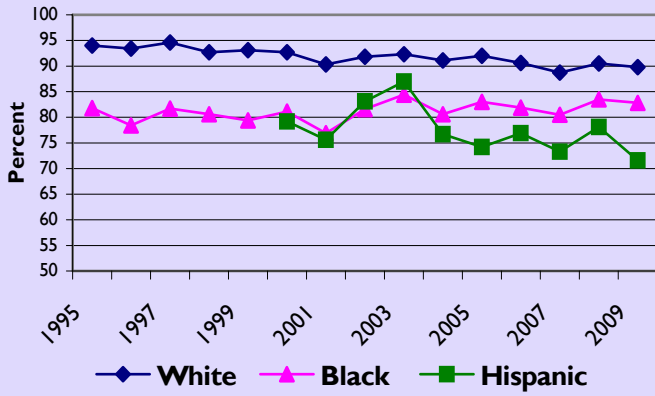
†Deaths per 1,000 live births.

Data source is the Maryland Department of Health and Mental Hygiene Vital Statistics Administration unless otherwise noted.

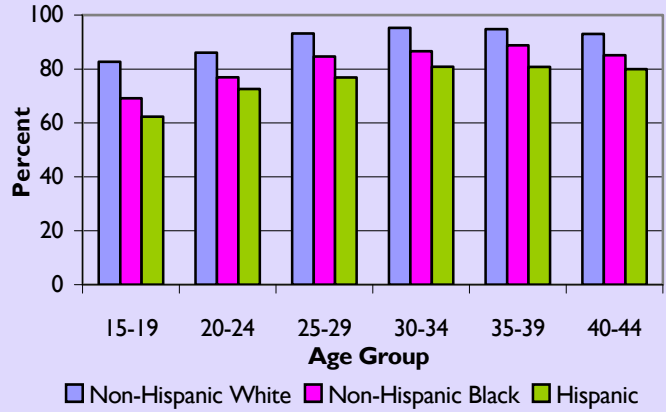
LBW = Low Birth Weight. SIDS = Sudden Infant Death Syndrome.

Selected Risk Factors for Infant Mortality

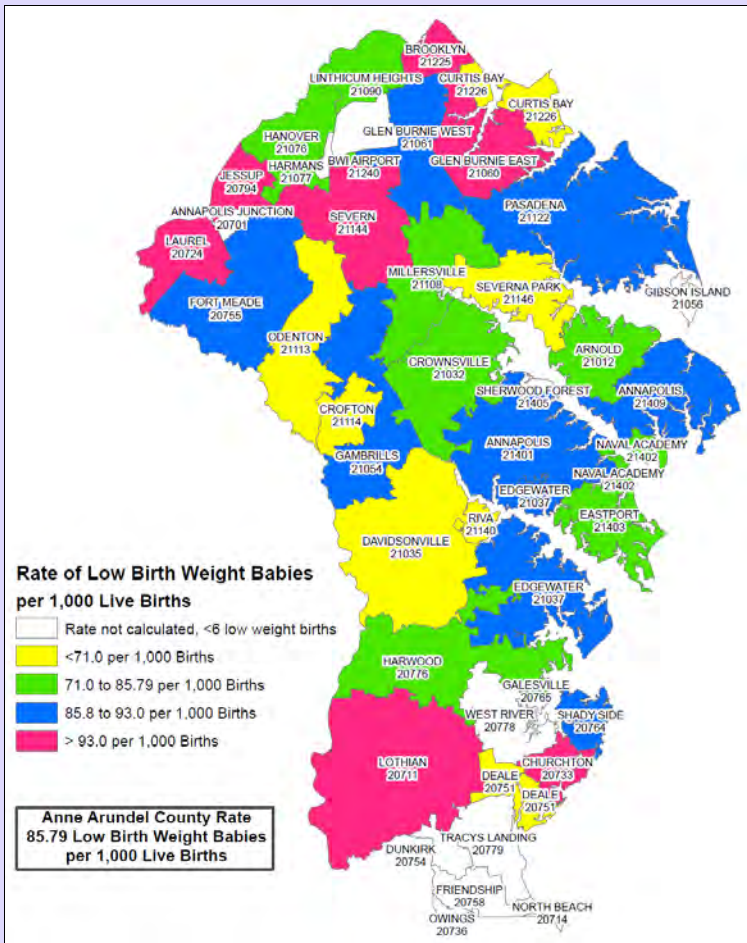
**Early Prenatal Care Initiation by Race/Ethnicity
Anne Arundel County**



**Early Prenatal Care by Age and Race/Ethnicity
Anne Arundel County (2004-2008)**



**Rate of Low Birth Weight Babies by ZIP Code
Anne Arundel County (2004-2008)**

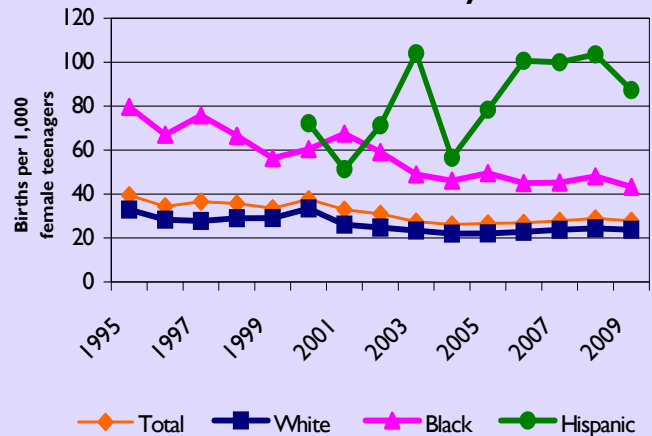


PRENATAL CARE AND INFANT HEALTH

Early prenatal care initiation (first trimester) is important to detect and manage any problems with the mother or baby. Women with late or no prenatal care have higher rates of low birth weight and newborn deaths. Early prenatal care initiation in Maryland and Anne Arundel County has been decreasing in the last decade.

Source: Maryland Vital Statistics Administration

**Trends in Teenage (15-19 Years) Birth Rates
Anne Arundel County**



Note: Preterm babies are born at less than 37 weeks gestation. Low birth weight babies weigh 5.5 pounds or less at birth.