

Anne Arundel County Health Data By Councilmanic Districts and ZIP Codes

Office of Assessment, Planning and Response
Anne Arundel County Department of Health
May 2014

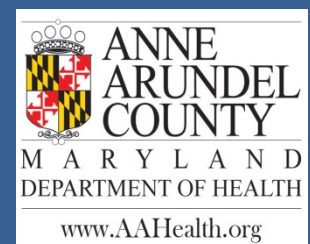


Table of Contents

Introduction	2
Geography of Councilmanic Districts and ZIP Code Areas	4
Demographics and Social Determinants of Health	8
Maternal and Child Health	20
Chronic Health Conditions	27
HIV	38
Appendix	41
Acknowledgements	42

Introduction

The Anne Arundel County Department of Health analyzes demographic, socioeconomic and health data by ZIP codes and regions in order to determine if health concerns are concentrated in particular geographic areas. Examining data by geographic areas is a valuable planning tool for County government agencies, health care providers, businesses, community organizations and others in the community. The identification of health needs by geographic areas can provide valuable information in order to allocate resources to the areas of greatest need and allow for the development and implementation of community-based initiatives to improve health and well-being.

Anne Arundel County has more than 544,400 people residing across seven Councilmanic (County Council) districts. These districts include entire ZIP codes and parts of ZIP codes. Districts are periodically redrawn based upon population estimates so that each Council member represents an approximately equal amount of constituents.

Methodology

Through epidemiological analysis of available data, the Department of Health has compiled this report by Councilmanic district. County level demographic data is provided for 2011 from the Census Bureau's Population Estimates and State and County Quick Facts. Demographic and social determinants of health data (e.g., income, education, unemployment, Food Stamp/SNAP benefit) are provided from 2007-2011 American Community Survey 5-year estimates.

While health data is not readily available by Councilmanic districts, this analysis involved creating data tables by ZIP code and overlaying them with the maps of Councilmanic districts. ZIP codes can cross Councilmanic districts so the map on page 5 illustrates the ZIP codes located in each Councilmanic district and the tables on page 6 to 7 show the percentage of ZIP codes in each Councilmanic district. These comparisons aid readers in better understanding the burden of health and other related conditions by Councilmanic district.

Key Findings

District 4 has the highest population at 84,271 and District 3 has the lowest at 71,393. The County overall median age is 38.6 and ranges from 32.5 in District 4 to 40.6 in District 7. The greatest proportion of White, non-Hispanic residents live in Districts 5, 3 and 7. The greatest percentage of Black, non-Hispanic residents live in Districts 4 and 1 and the smallest percentage live in Districts 5, 7 and 3. Hispanic residents represent 6.4 percent of the County population and range from 2.8 percent in District 3 to 11.3 percent in District 6. Asian residents comprise 3.3 percent of the County's total population and range from a low of 1.3 percent in District 7 to

a high of 5.1 percent in Districts 1 and 2. The County's poverty rates are highest in Districts 1, 2, 3 and the Annapolis portion of District 6.

Infant mortality is highest in the areas of Districts 1, 2 and 3, as well as the Fort Meade and Laurel portions of District 4, and the Arnold section of District 5. Emergency Department visit rates for behavioral health conditions are highest in the areas of Districts 1, 2, 3 and 6. Crude incidence rates for cancers are highest in the areas of Districts 6 and 7. The highest percentage of individuals living with HIV can be found in the areas of Districts 1, 2 and 6.

Overall, the County's most significant health issues are found in Districts 1 and 2, the Annapolis areas of District 6 and the rural District 7. These health trends are also consistent with socioeconomic determinants of health including employment status, income, educational attainment and access to health care. Reducing these health disparities is a key priority in the Department's Strategic Plan for fiscal years 2013-2016 and also a focus of the Healthy Anne Arundel Coalition.

Geography of Councilmanic Districts and ZIP Code Areas

Councilmanic Districts and ZIP Code Areas, Anne Arundel County, 2011



Percentage of ZIP Code Areas* in Councilmanic Districts, Anne Arundel County, 2011

District	ZIP Code	Name	Percent of ZIP Code in District
District 1	20701	Annapolis Junction**	97%
	20724	Laurel	18%
	20794	Jessup**	97%
	21060	Glen Burnie East	12%
	21061	Glen Burnie West	38%
	21076	Hanover**	96%
	21077	Harmans	89%
	21090	Linthicum Heights	100%
	21144	Severn	20%
	21225	Brooklyn**	100%
	21226	Curtis Bay**	25%
	21240	BWI Airport	100%
District 2	21060	Glen Burnie East	32%
	21061	Glen Burnie West	62%
	21076	Hanover**	3%
	21077	Harmans	11%
	21108	Millersville	19%
	21113	Odenton	1%
	21122	Pasadena	1%
	21144	Severn	56%
District 3	21056	Gibson Island	100%
	21060	Glen Burnie East	56%
	21122	Pasadena	98%
	21146	Severna Park	6%
	21226	Curtis Bay**	75%
District 4	20701	Annapolis Junction**	3%
	20724	Laurel	82%
	20755	Fort Meade	100%
	20794	Jessup**	3%
	21032	Crownsville	51%
	21054	Gambrills	47%
	21076	Hanover**	3%
	21108	Millersville	48%
	21113	Odenton	99%
	21114	Crofton	22%
	21144	Severn	24%

**Percentage of ZIP Code Areas* in Councilmanic District, Anne Arundel County, 2011
(Continued)**

District	ZIP Code	Name	Percent of ZIP Code in District
District 5	21012	Arnold	100%
	21146	Severna Park	94%
	21409	Annapolis	100%
	21402	Naval Academy	60%
	21122	Pasadena	1%
	21108	Millersville	33%
District 6	21405	Sherwood Forest	100%
	21037	Edgewater	7%
	21403	Eastport	100%
	21402	Naval Academy	40%
	21401	Annapolis	100%
	21032	Crownsville	47%
District 7	21140	Riva	100%
	20733	Churchton	100%
	20714	North Beach**	100%
	20754	Dunkirk**	100%
	20711	Lothian	100%
	20764	Shady Side	100%
	20776	Harwood	100%
	21037	Edgewater	93%
	21035	Davidsonville	100%
	20751	Deale	100%
	20778	West River	100%
	20765	Galesville	100%
	21114	Crofton	78%
	20779	Tracys Landing	100%
	20758	Friendship	100%
	20736	Owings**	100%
	21054	Gambrills	53%
	21032	Crownsville	2%

*Percent of ZIP Code areas in Councilmanic district is a round estimate.

** ZIP Codes shared with other Counties; only areas within Anne Arundel County are included.

Demographics and Social Determinants of Health

Demographics by Councilmanic District, Anne Arundel County, 2011*

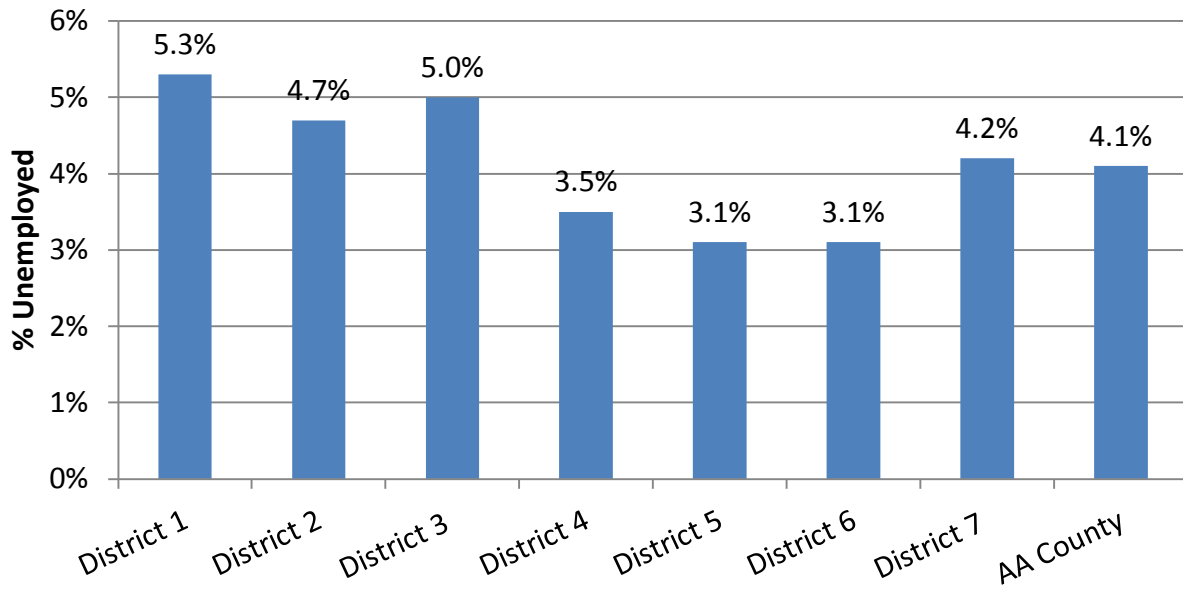
	District 1	District 2	District 3	District 4	District 5	District 6	District 7	Anne Arundel County
POPULATION								
Total	73,835	73,760	71,939	84,271	74,881	75,204	78,479	544,403
Male %	50.0%	48.3%	50.1%	48.5%	49.3%	50.3%	50.0%	49.4%
Female %	50.0%	51.7%	49.9%	51.5%	50.7%	49.7%	50.0%	50.6%
AGE								
Under 5 years	5.9%	7.0%	5.6%	8.5%	5.7%	5.9%	6.1%	6.4%
18 years and over	78.1%	78.2%	77.2%	72.6%	74.0%	82.2%	75.1%	77.0%
65 years and over	11.3%	11.2%	11.2%	6.8%	13.0%	16.7%	11.8%	12.1%
Median age (years)	37.5	37.1	40.0	32.5	41.7	40.5	40.6	38.6
RACE AND ETHNICITY								
Hispanic (Any Race)	5.6%	6.4%	2.8%	7.7%	3.5%	11.3%	3.1%	6.4%
White, non-Hispanic	60.9%	66.1%	86.5%	56.7%	87.1%	68.7%	86.4%	71.9%
Black, non-Hispanic	23.9%	18.2%	7.0%	26.8%	4.3%	15.9%	6.6%	15.5%
Asian	5.1%	5.1%	1.7%	4.9%	2.9%	2.5%	1.3%	3.6%
Total housing units	26,362	31,300	27,251	33,572	27,610	34,424	30,858	214,523

Data Source: 2007-2011 American Community Survey 5-Year Estimates for District level data.

2011 Population Estimates and State and County Quick Facts for County level data.

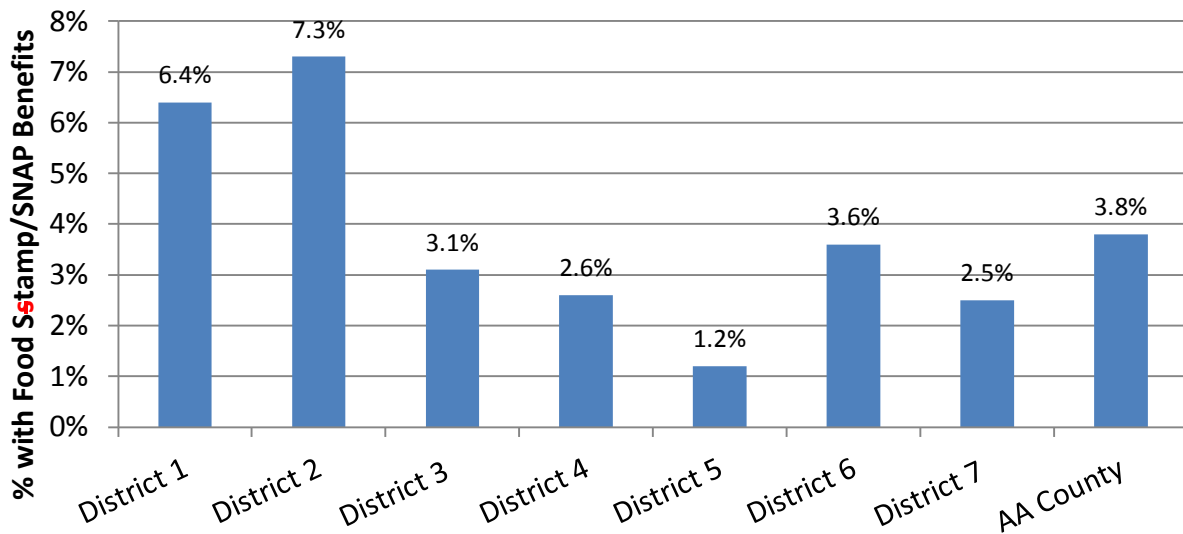
*District totals do not equal the County total since the data estimates come from different sources.

Estimated Unemployment Rate by District, Anne Arundel County, 2011



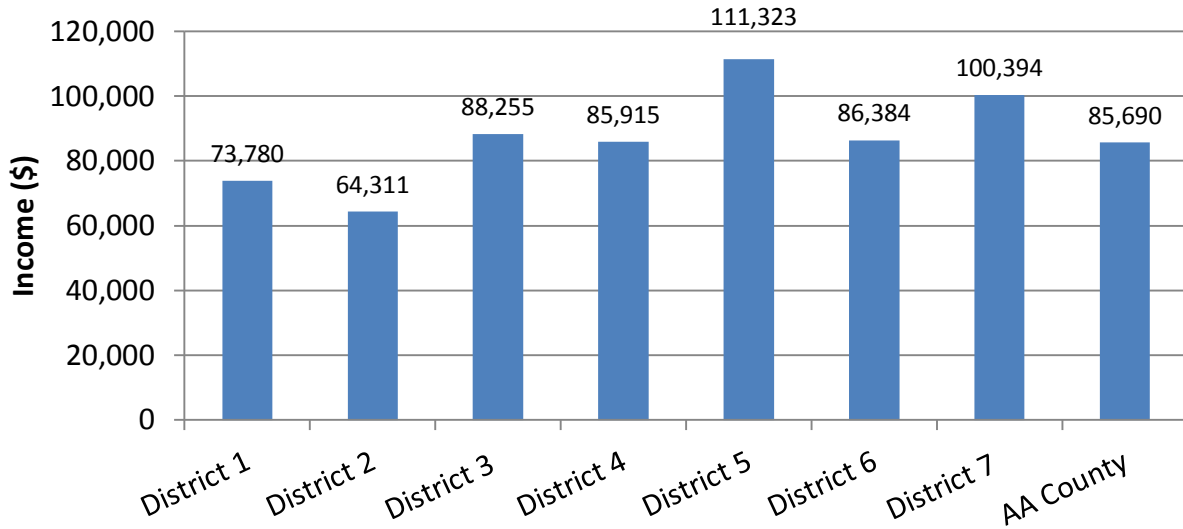
Data Source: 2007-2011 American Community Survey 5-Year Estimates

Estimated Household with Food Stamp/SNAP Benefits in the past 12 months by District, Anne Arundel County, 2011



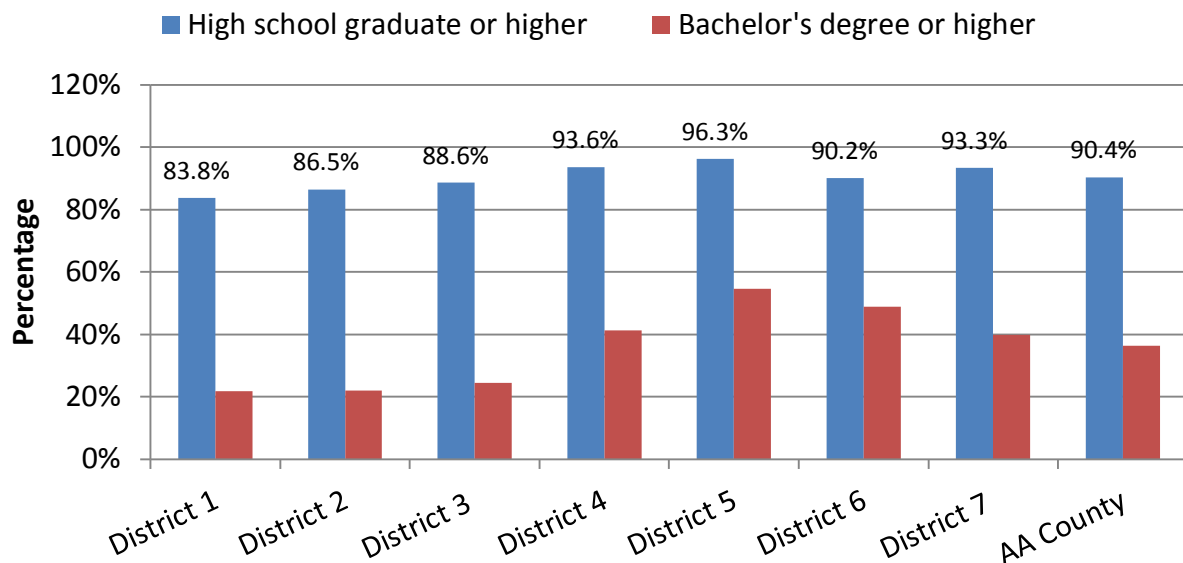
Data Source: 2007-2011 American Community Survey 5- Year Estimates

Estimated Median Household Income by District, Anne Arundel County, 2011



Data Source: 2007-2011 American Community Survey 5-Year Estimates

Estimated Educational Attainment by District, Anne Arundel County, 2011



Data Source: 2007-2011 American Community Survey 5-Year Estimates

Estimated Poverty in past 12 months, Anne Arundel County, 2011

ZIP Code	Name	% Below Poverty Level
20701*	Annapolis Junction	---
20711	Lothian	3.6%
20714*	North Beach	6.5%
20724	Laurel	4.7%
20733	Churchton	3.5%
20736*	Owings	---
20751	Deale	2.1%
20754*	Dunkirk	2.5%
20755	Ft. Meade	3.8%
20758	Friendship	0.0%
20764	Shady Side	12.3%
20765	Galesville	2.4%
20776	Harwood	2.9%
20778	West River	3.8%
20779	Tracys Landing	4.2%
20794*	Jessup	5.9%
21012	Arnold	1.8%
21032	Crownsville	3.0%
21035	Davidsonville	1.6%
21037	Edgewater	4.0%
21054	Gambrills	2.1%
21056	Gibson Island	0.0%
21060	Glen Burnie (East)	8.9%
21061	Glen Burnie (West)	9.6%
21076*	Hanover	4.4%
21077	Harmans	47.7%
21090	Linthicum Heights	6.9%
21108	Millersville	2.3%
21113	Odenton	4.2%
21114	Crofton	2.5%
21122	Pasadena	5.0%
21140	Riva	4.0%
21144	Severn	7.4%
21146	Severna Park	2.3%
21225*	Brooklyn	24.8%
21226*	Curtis Bay	12.8%
21401	Annapolis	7.4%
21402	Naval Academy	16.7%
21403	Eastport	7.5%
21405	Sherwood Forest	0.0%
21409	Annapolis	1.6%
	Anne Arundel County	5.5%

Data Source: 2007-2011 American Community Survey 5-Year Estimates, Poverty Status in the past 12 months.

* ZIP Codes shared with other Counties; data presented is for the entire ZIP Code.

---- Estimates could not be made due to a small sample size.

Estimated Poverty Percentage by ZIP Code, Anne Arundel County, 2011

Poverty Percentage

- <2.5%
- 2.5%-4%
- 4.1%-7.5%
- >7.5%
- Not Available

0 2.5 5 10 Miles

ANNE ARUNDEL COUNTY
MARYLAND
Department of Health

Office of Assessment,
Planning and Response
Date: 3/17/2014

Data Source: 2007-2011 American Community Survey

WIC Participation Rate per 1,000 Population by ZIP Code, Anne Arundel County, 2007-2011

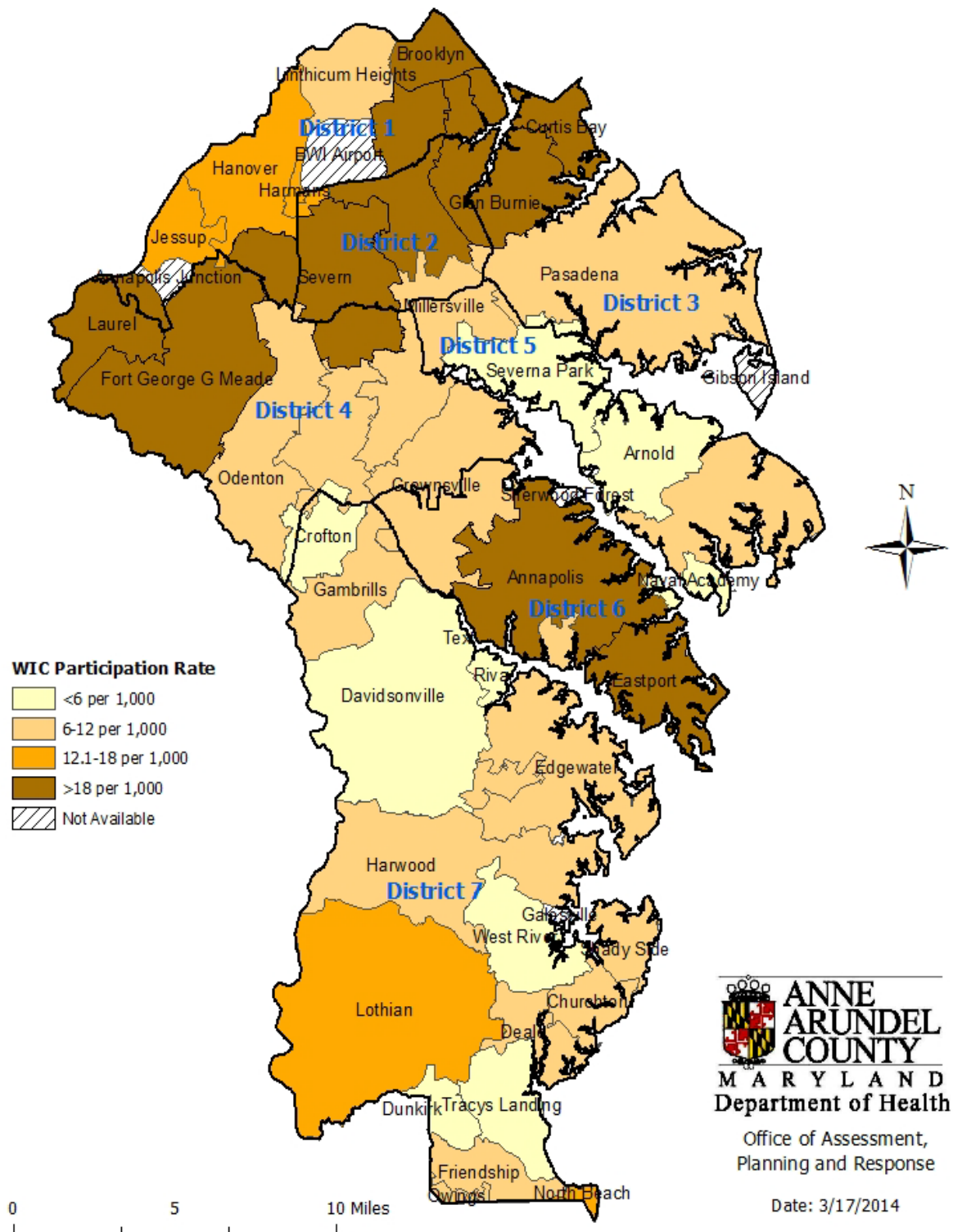
ZIP Code	Name	WIC Participation Rate
20701*	Annapolis Junction	---
20711	Lothian	14.16
20714*	North Beach	13.2
20724	Laurel	20.49
20733	Churchton	7.2
20736*	Owings	---
20751	Deale	7.2
20754*	Dunkirk	5.62
20755	Ft. Meade	46.15
20758	Friendship	7.6
20764	Shady Side	9.3
20765	Galesville	---
20776	Harwood	8.4
20778	West River	4.0
20779	Tracys Landing	3.7
20794*	Jessup	12.26
21012	Arnold	5.56
21032	Crownsville	7.0
21035	Davidsonville	2.21
21037	Edgewater	10.82
21054	Gambrills	6.04
21056	Gibson Island	---
21060	Glen Burnie (East)	30.32
21061	Glen Burnie (West)	32.48
21076*	Hanover	14.4
21077	Harmans	12.1
21090	Linthicum Heights	9.24
21108	Millersville	8.92
21113	Odenton	10.12
21114	Crofton	5.54
21122	Pasadena	11.69
21140	Riva	5.7
21144	Severn	21.18
21146	Severna Park	3.50
21225*	Brooklyn	60.44
21226*	Curtis Bay	25.54
21401	Annapolis	21.30
21402	Naval Academy	4.4
21403	Eastport	27.28
21405	Sherwood Forest	---
21409	Annapolis	6.16

* ZIP Codes shared with other Counties; data presented is for the entire ZIP Code.

---- Not calculated due to a small population.

Data Source: Maryland Health Enterprise Zone, Maryland Department of Health and Mental Hygiene (DHMH).

**WIC Participation Rate per 1,000 Population by ZIP Code,
Anne Arundel County, 2007-2011**



Source: Maryland Health Enterprise Zone, Maryland DHMH

**Medicaid Enrollment Rate per 1,000 Population by ZIP Code,
Anne Arundel County, 2007-2011**

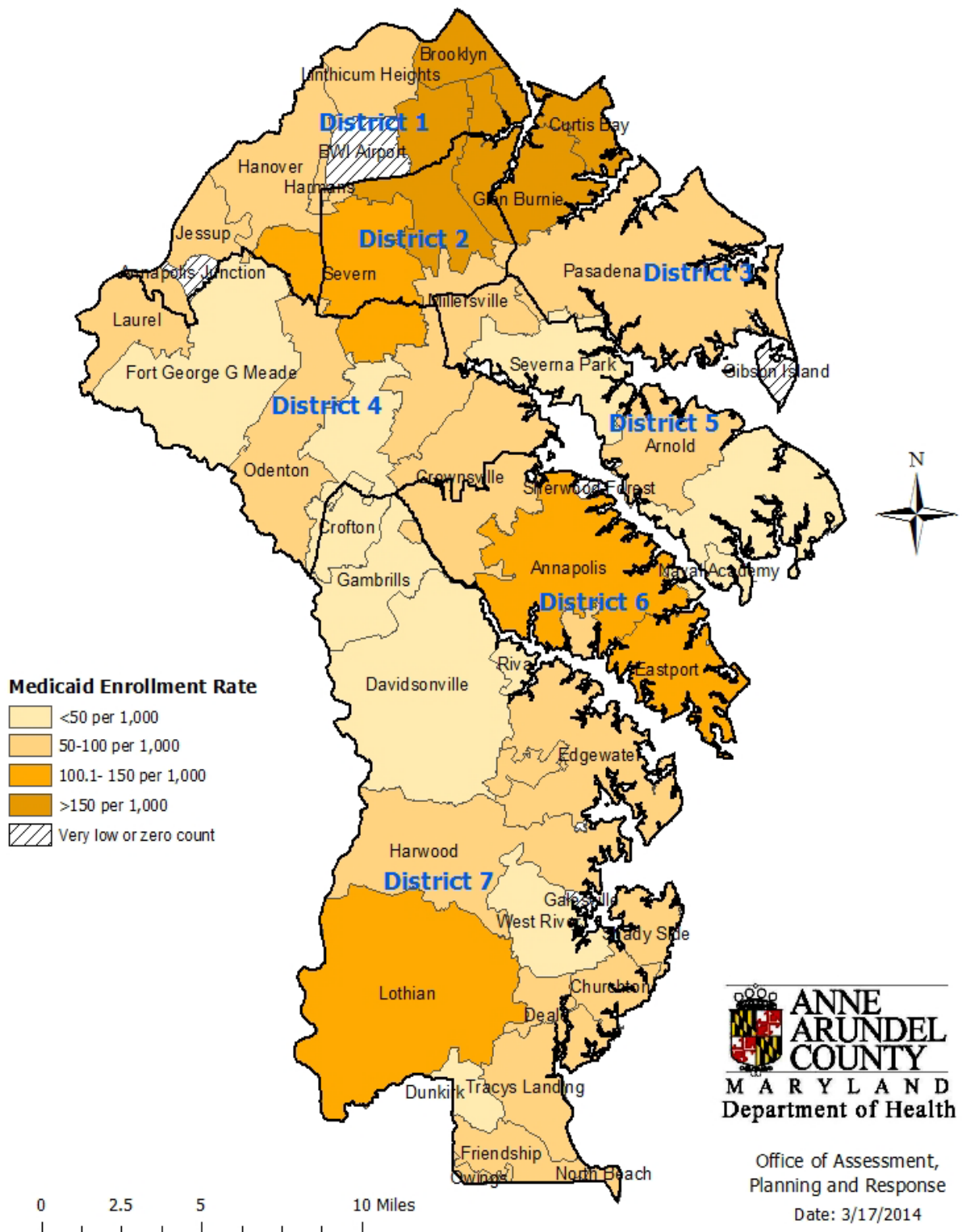
ZIP Code	Name	Medicaid Enrollment Rate
20701*	Annapolis Junction	---
20711	Lothian	122.46
20714*	North Beach	98.5
20724	Laurel	96.86
20733	Churchton	54.4
20736*	Owings	---
20751	Deale	63.6
20754*	Dunkirk	47.61
20755	Ft. Meade	22.58
20758	Friendship	77.7
20764	Shady Side	82.8
20765	Galesville	---
20776	Harwood	67.1
20778	West River	46.1
20779	Tracys Landing	69.96
20794*	Jessup	63.70
21012	Arnold	50.73
21032	Crownsville	60.67
21035	Davidsonville	28.34
21037	Edgewater	70.02
21054	Gambrills	41.51
21056	Gibson Island	---
21060	Glen Burnie (East)	176.81
21061	Glen Burnie (West)	177.94
21076*	Hanover	84.38
21077	Harmans	56.1
21090	Linthicum Heights	71.66
21108	Millersville	58.78
21113	Odenton	65.06
21114	Crofton	44.94
21122	Pasadena	83.28
21140	Riva	32.0
21144	Severn	121.45
21146	Severna Park	37.05
21225*	Brooklyn	408.58
21226*	Curtis Bay	205.3
21401	Annapolis	130.72
21402	Naval Academy	2.9
21403	Eastport	110.32
21405	Sherwood Forest	---
21409	Annapolis	41.39

* ZIP Codes shared with other Counties; data presented is for the entire ZIP Code.

---- Not calculated due to a small population.

Data Source: Maryland Health Enterprise Zone, Maryland Department of Health and Mental Hygiene (DHMH).

Medicaid Enrollment Rate per 1,000 Population by ZIP Code, Anne Arundel County, 2007-2011



Estimated Population without Health Insurance by ZIP Code, Anne Arundel County, 2012

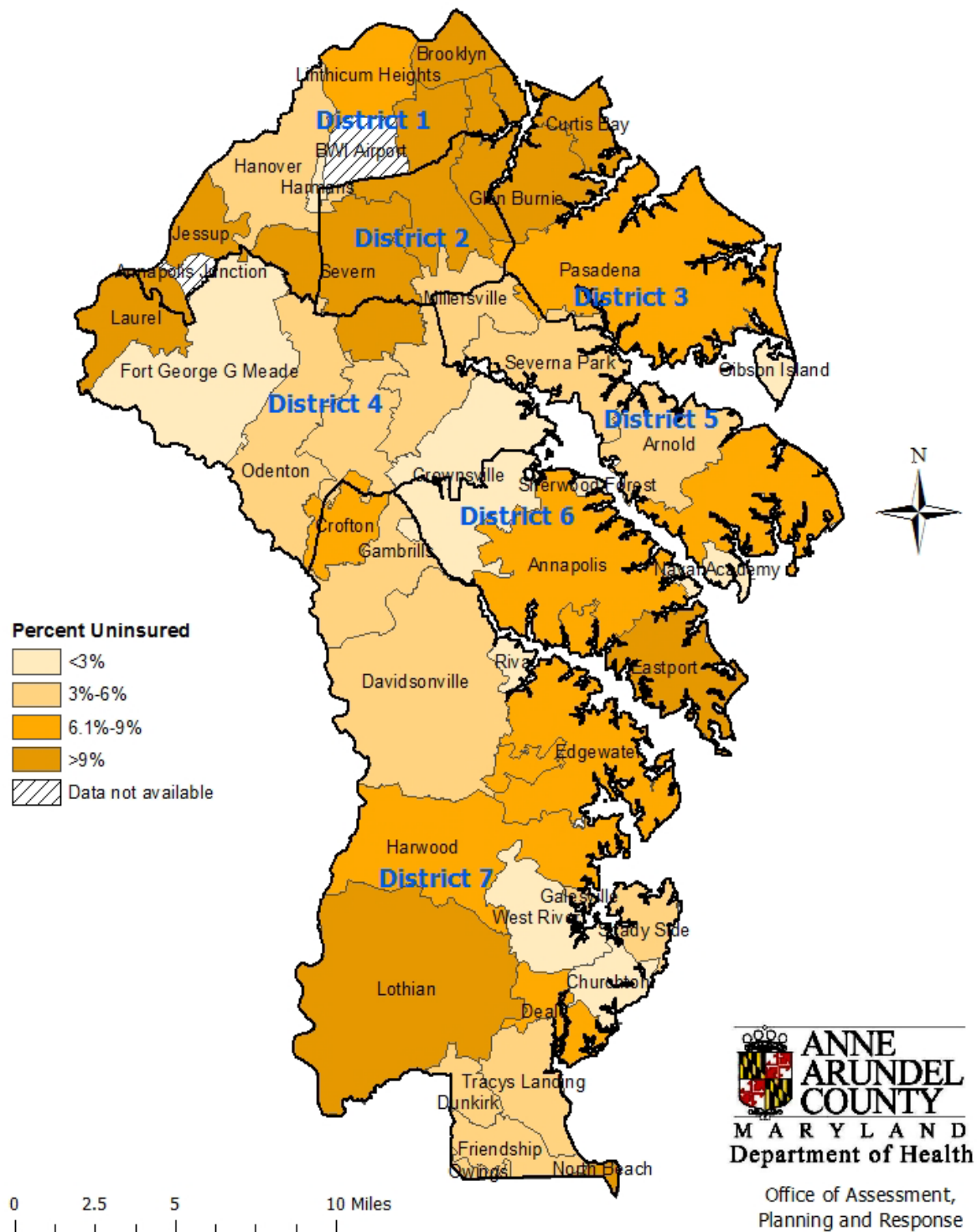
ZIP Code	Name	Number Uninsured	Percent Uninsured
20701*	Annapolis Junction	---	---
20711	Lothian	637	9.9%
20714*	North Beach	368	9.1%
20724	Laurel	1,348	9.1%
20733	Churchton	74	2.7%
20736*	Owings	---	---
20751	Deale	175	8.4%
20754*	Dunkirk	344	5.0%
20755	Ft. Meade	135	1.7%
20758	Friendship	20	3.0%
20764	Shady Side	234	5.1%
20765	Galesville	17	4.0%
20776	Harwood	286	7.9%
20778	West River	62	2.9%
20779	Tracys Landing	64	5.4%
20794*	Jessup	995	12.9%
21012	Arnold	961	4.7%
21032	Crownsville	237	2.8%
21035	Davidsonville	259	3.3%
21037	Edgewater	1,771	8.7%
21054	Gambrills	289	3.1%
21056	Gibson Island	---	---
21060	Glen Burnie (East)	3,554	12.5%
21061	Glen Burnie (West)	7,215	13.8%
21076*	Hanover	570	4.4%
21077	Harmans	---	---
21090	Linthicum Heights	707	6.9%
21108	Millersville	970	5.4%
21113	Odenton	1,488	5.0%
21114	Crofton	1,902	7.4%
21122	Pasadena	4,322	7.2%
21140	Riva	55	1.6%
21144	Severn	2,944	9.3%
21146	Severna Park	867	3.3%
21225*	Brooklyn	5,084	14.4%
21226*	Curtis Bay	929	14.0%
21401	Annapolis	3,141	8.8%
21402	Naval Academy	18	1.8%
21403	Eastport	3,373	11.5%
21405	Sherwood Forest	---	---
21409	Annapolis	1,388	7.2%
	Anne Arundel County	41,429	8.0%

Source: 2008-2012 American Community Survey 5-Year Estimates.

--- Very low count or not reliable data.

* ZIP Codes are shared with other Counties; data and rates are for Anne Arundel County only.

Percentage of Population without Health Insurance by ZIP Code, Anne Arundel County, 2012



Data Source: 2008-2012 American Community Survey 5-Year Estimates

Maternal and Child Health

Low Birth Weight Percent by ZIP Code, Anne Arundel County, 2006-2010

ZIP Code	Name	Low Birth Weight % (2006-2010)
20701*	Annapolis Junction	---
20711	Lothian	6.3%
20714*	North Beach	6.7%
20724	Laurel	7.6%
20733	Churchton	8.2%
20736*	Owings	---
20751	Deale	4.3%
20754*	Dunkirk	5.7%
20755	Ft. Meade	5.6%
20758	Friendship	---
20764	Shady Side	6.6%
20765	Galesville	---
20776	Harwood	9.5%
20778	West River	5.0%
20779	Tracys Landing	9.3%
20794*	Jessup	6.8%
21012	Arnold	3.8%
21032	Crownsville	4.8%
21035	Davidsonville	3.5%
21037	Edgewater	5.2%
21054	Gambrills	5.8%
21056	Gibson Island	---
21060	Glen Burnie (East)	6.7%
21061	Glen Burnie (West)	6.7%
21076*	Hanover	7.4%
21077	Harmans	---
21090	Linthicum Heights	4.3%
21108	Millersville	5.3%
21113	Odenton	6.1%
21114	Crofton	4.3%
21122	Pasadena	6.0%
21140	Riva	5.1%
21144	Severn	8.2%
21146	Severna Park	3.8%
21225*	Brooklyn	11.3%
21226*	Curtis Bay	9.4%
21401	Annapolis	6.4%
21402	Naval Academy	7.6%
21403	Eastport	5.7%
21405	Sherwood Forest	---
21409	Annapolis	6.5%

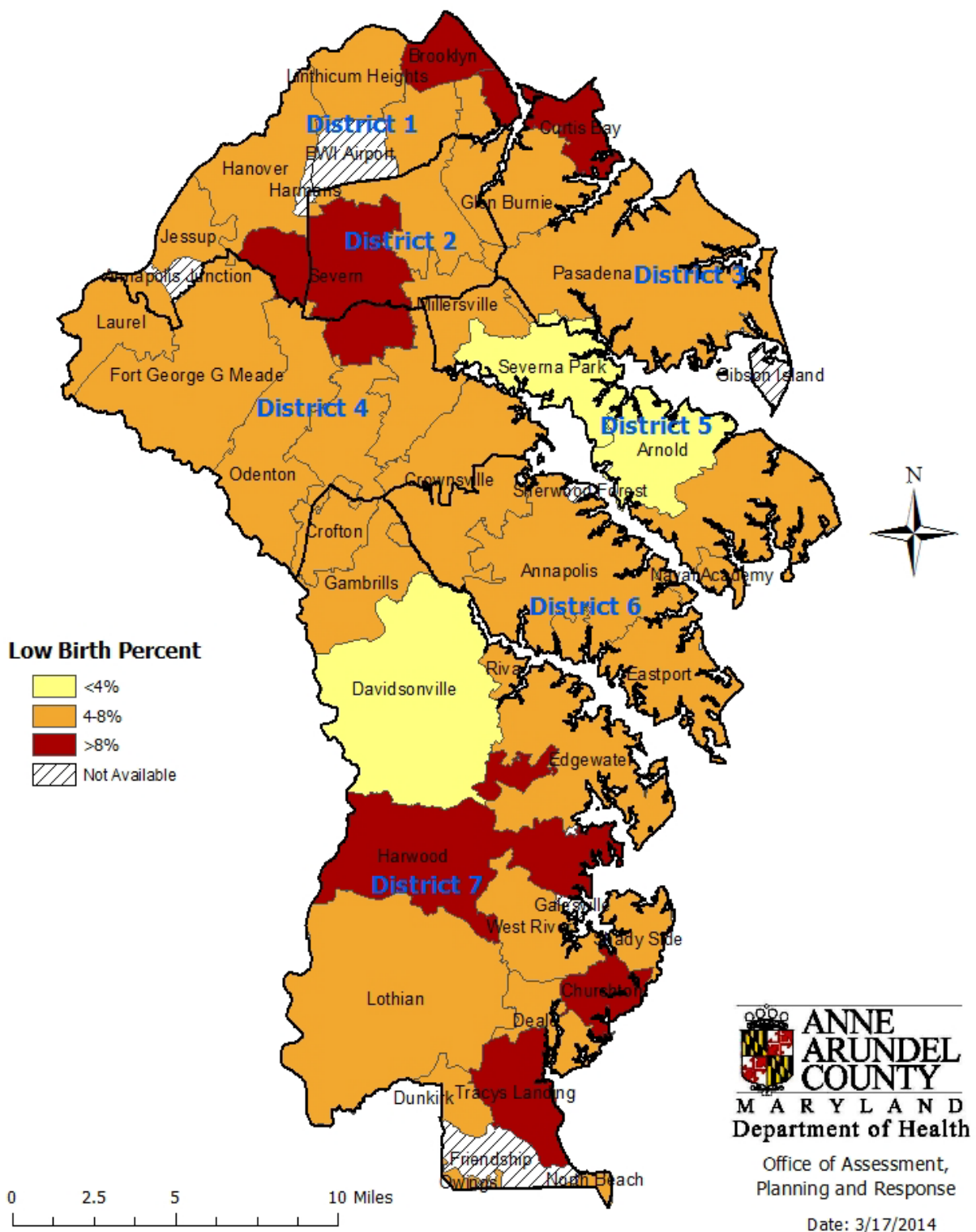
* ZIP Codes shared with other Counties; data presented is for the entire ZIP Code.

---- Data is unavailable due to a small number of births or no birth.

Data Source: Maryland Health Enterprise Zone, Maryland Department of Health and Mental Hygiene (DHMH).

Low birth weight babies weigh 5.5 pounds or less at birth.

Percentage of Low Birth Weight by ZIP Code, Anne Arundel County, 2006-2010



Source: Maryland Health Enterprise Zone, Maryland DHMH

**Number and Percentage of Births to Mothers less than 20 Years of Age by ZIP Code,
Anne Arundel County, 2007-2011**

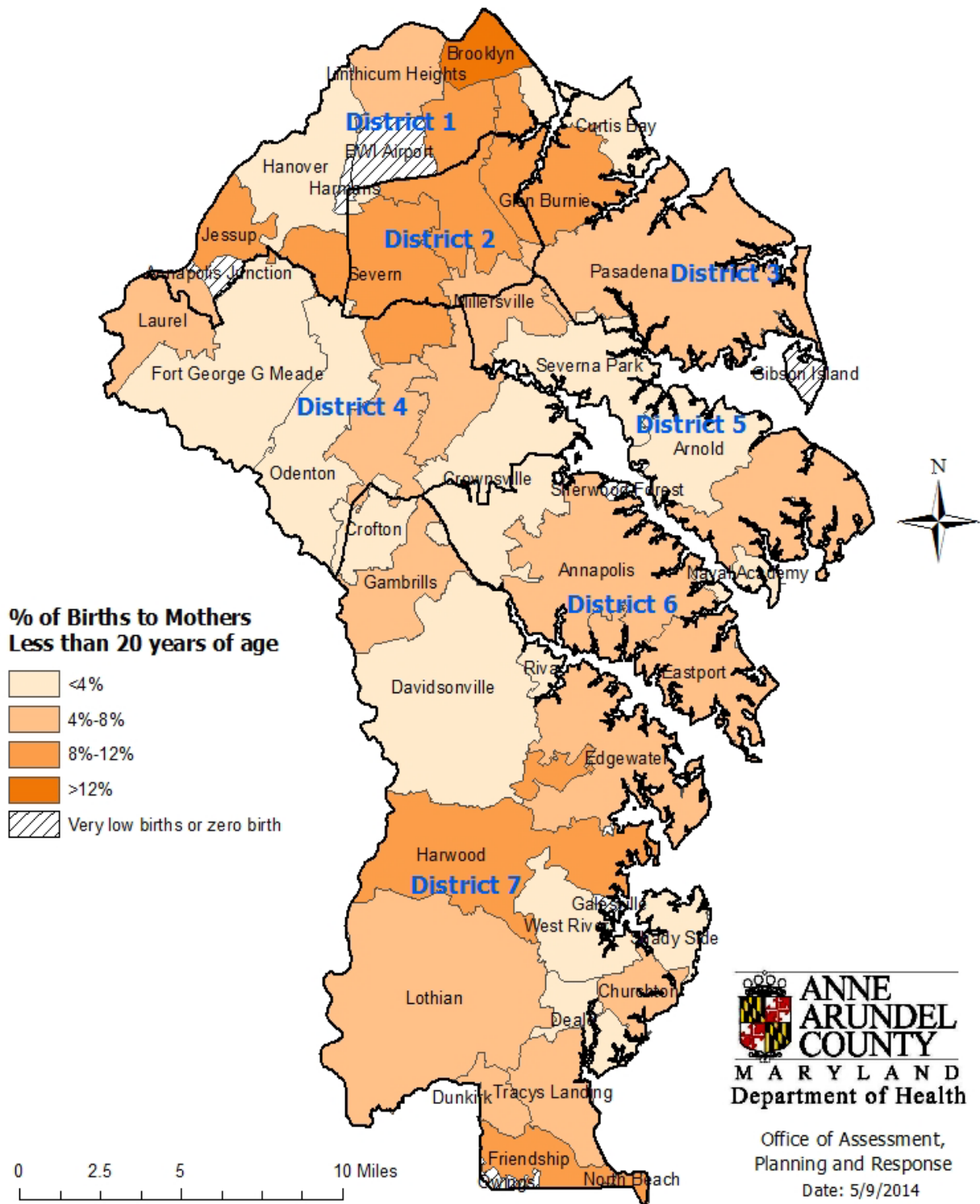
ZIP Code	Name	Births by Teen Mothers	% of Births by Teen Mothers
20701*	Annapolis Junction	---	---
20711	Lothian	23	7.1%
20714*	North Beach	---	---
20724	Laurel	78	5.1%
20733	Churchton	10	6.0%
20736*	Owings	---	---
20751	Deale	---	---
20754*	Dunkirk	---	---
20755	Ft. Meade	40	3.0%
20758	Friendship	---	---
20764	Shady Side	---	---
20765	Galesville	---	---
20776	Harwood	13	8.1%
20778	West River	---	---
20779	Tracys Landing	---	----
20794*	Jessup	8	8.8%
21012	Arnold	28	2.6%
21032	Crownsville	---	---
21035	Davidsonville	7	3.2%
21037	Edgewater	69	5.6%
21054	Gambrills	25	4.8%
21056	Gibson Island	---	---
21060	Glen Burnie (East)	221	10.6%
21061	Glen Burnie (West)	423	10.2%
21076*	Hanover	28	3.2%
21077	Harmans	---	---
21090	Linthicum Heights	34	6.5%
21108	Millersville	43	4.3%
21113	Odenton	98	3.8%
21114	Crofton	41	2.2%
21122	Pasadena	260	7.2%
21140	Riva	7	3.8%
21144	Severn	186	8.1%
21146	Severna Park	34	3.4%
21225*	Brooklyn	126	13.6%
21226*	Curtis Bay	10	3.3%
21401	Annapolis	177	7.1%
21402	Naval Academy	---	---
21403	Eastport	158	6.8%
21405	Sherwood Forest	---	---
21409	Annapolis	46	4.4%
	Anne Arundel County	2,223	6.3%

* ZIP Codes are shared with other Counties; data and rates are for Anne Arundel County only.

---- Count zero or too low to report.

Data Source: Vital Statistics Administration, Maryland Department of Health and Mental Hygiene (DHMH).

Percentage of Births to Mothers less than 20 Years of Age by ZIP Code, Anne Arundel County, 2007-2011



Data Source: Vital Statistics Administration, Maryland DHMH

Infant Mortality Rate per 1,000 Live Births by ZIP Code, Anne Arundel County, 2007-2011

ZIP Code	Name	Number of Infant Deaths	Infant Mortality Rate
20701*	Annapolis Junction	---	---
20711	Lothian	---	---
20714*	North Beach	---	---
20724	Laurel	12	7.8
20733	Churchton	---	---
20736*	Owings	---	---
20751	Deale	---	---
20754*	Dunkirk	---	---
20755	Ft. Meade	8	5.9
20758	Friendship	---	---
20764	Shady Side	---	---
20765	Galesville	---	---
20776	Harwood	---	---
20778	West River	---	---
20779	Tracys Landing	---	---
20794*	Jessup	---	---
21012	Arnold	8	7.5
21032	Crownsville	---	---
21035	Davidsonville	---	---
21037	Edgewater	---	---
21054	Gambrills	---	---
21056	Gibson Island	---	---
21060	Glen Burnie (East)	11	5.3
21061	Glen Burnie (West)	28	6.8
21076*	Hanover	---	---
21077	Harmans	---	---
21090	Linthicum Heights	---	---
21108	Millersville	---	---
21113	Odenton	13	5.0
21114	Crofton	10	5.4
21122	Pasadena	22	6.1
21140	Riva	---	---
21144	Severn	9	3.9
21146	Severna Park	---	---
21225*	Brooklyn	13	14.1
21226*	Curtis Bay	---	---
21401	Annapolis	13	5.2
21402	Naval Academy	---	---
21403	Eastport	13	5.6
21405	Sherwood Forest	---	---
21409	Annapolis	---	---
	Anne Arundel County	211	5.9

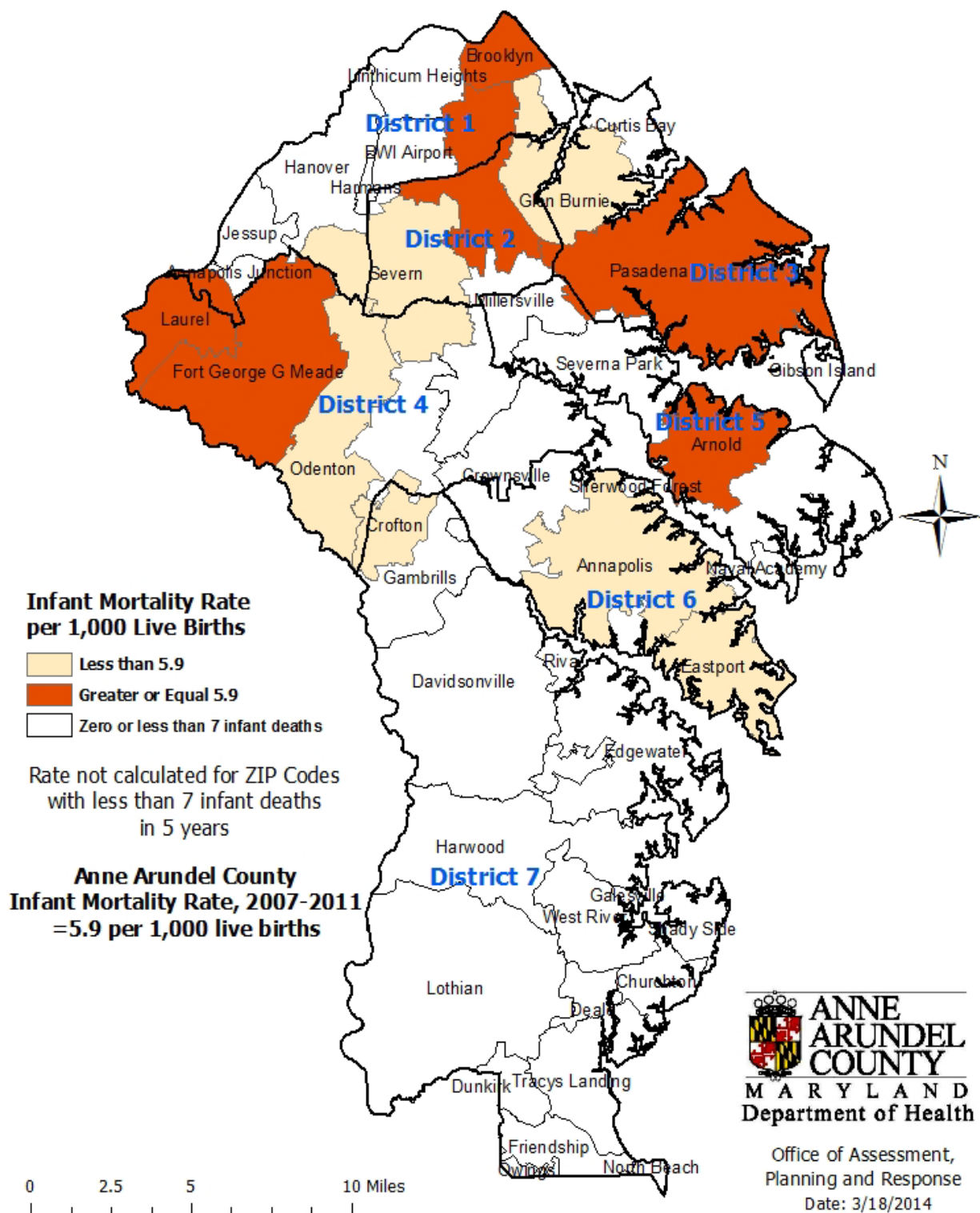
* ZIP Codes are shared with other Counties; data and rates are for Anne Arundel County only.

---- Rates were not calculated for counts <7.

Data Source: Vital Statistics Administration, Maryland Department of Health and Mental Hygiene (DHMH).

The death of a baby before his or her first birthday is called infant mortality.

Infant Mortality Rate by ZIP Code per 1,000 Live Births, Anne Arundel County, 2007-2011



Chronic Health Conditions

**Emergency Department Visit Rate for Behavioral Health Conditions, per 100,000 Population
by ZIP Code, Anne Arundel County, 2012**

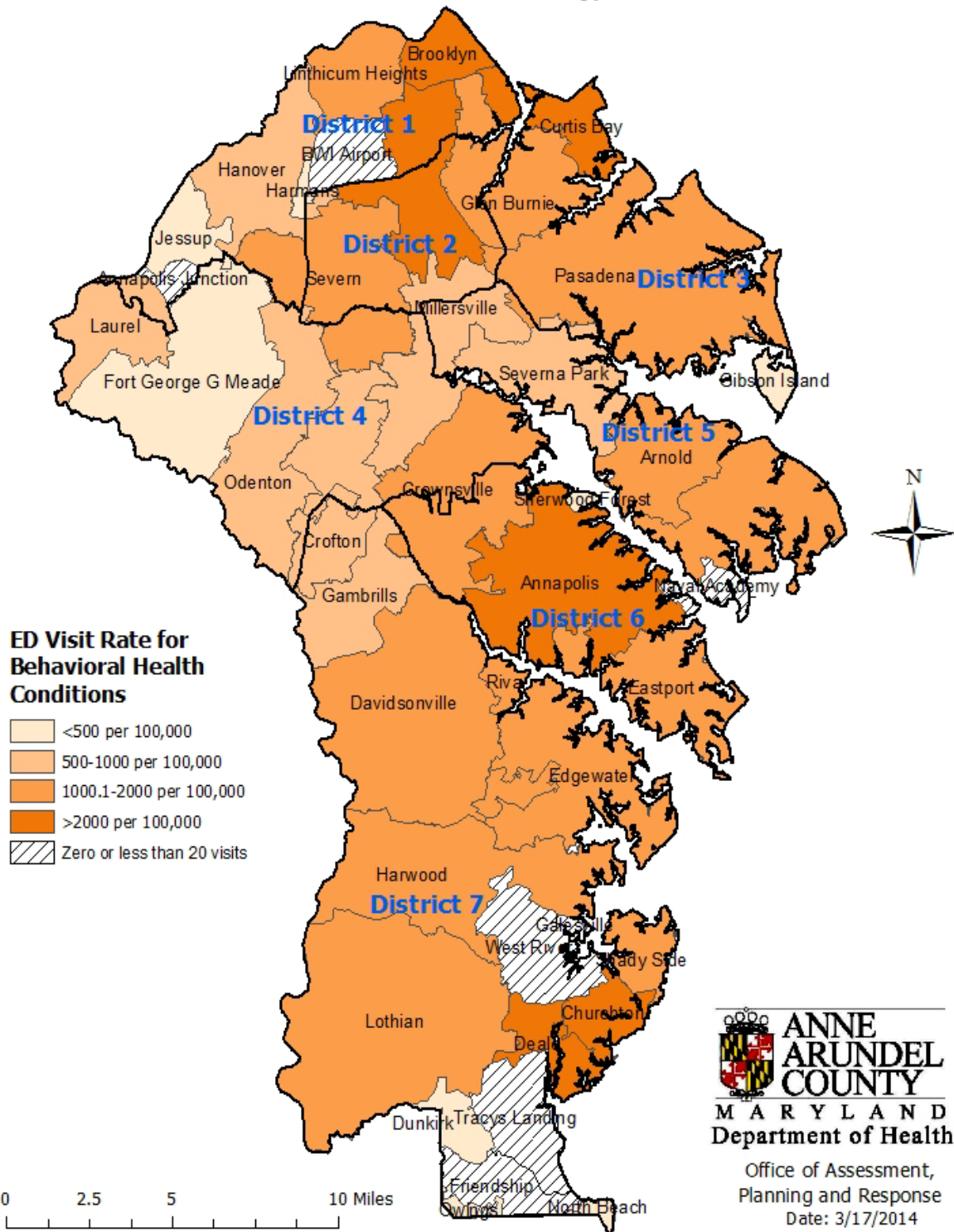
ZIP Code	Name	ED Visit Rate
20701*	Annapolis Junction	---
20711	Lothian	1,701
20714*	North Beach	---
20724	Laurel	696
20733	Churchton	2,133
20736*	Owings	---
20751	Deale	2,049
20754*	Dunkirk	---
20755	Ft. Meade	409
20758	Friendship	---
20764	Shady Side	1,700
20765	Galesville	---
20776	Harwood	1,368
20778	West River	---
20779	Tracys Landing	---
20794*	Jessup	170
21012	Arnold	1,051
21032	Crownsville	1,266
21035	Davidsonville	1,267
21037	Edgewater	1,513
21054	Gambrills	968
21056	Gibson Island	---
21060	Glen Burnie (East)	1,584
21061	Glen Burnie (West)	2,053
21076*	Hanover	525
21077	Harmans	---
21090	Linthicum Heights	1,216
21108	Millersville	829
21113	Odenton	794
21114	Crofton	892
21122	Pasadena	1,357
21140	Riva	1,331
21144	Severn	1,095
21146	Severna Park	831
21225*	Brooklyn	2,441
21226*	Curtis Bay	2,090
21401	Annapolis	2,027
21402	Naval Academy	---
21403	Eastport	1,553
21405	Sherwood Forest	---
21409	Annapolis	1,072
	Anne Arundel County	1,439

* ZIP Codes are shared with other Counties; data and rates are for Anne Arundel County only.

---- Count zero or too low to report.

Data Source: Health Services Cost Review Commission, Maryland Department of Health and Mental Hygiene (DHMH).
See Appendix for conditions included in behavioral health conditions.

ED Visit Rate for Behavioral Health Conditions per 100,000 Population by ZIP Code, Anne Arundel County, 2012



Data Source: Maryland Health Services Cost Review Commission

**Emergency Department Visit for Diabetes per 100,000 Population,
Anne Arundel County, July 2009 -June 2011 (2 years)**

ZIP Code	Name	Diabetes
20701*	Annapolis Junction	0
20711	Lothian	293.54
20714*	North Beach	0
20724	Laurel	114.96
20733	Churchton	---
20736*	Owings	0
20751	Deale	0
20754*	Dunkirk	0
20755	Ft. Meade	---
20758	Friendship	0
20764	Shady Side	---
20765	Galesville	---
20776	Harwood	---
20778	West River	0
20779	Tracys Landing	---
20794*	Jessup	---
21012	Arnold	60.98
21032	Crownsville	---
21035	Davidsonville	---
21037	Edgewater	138.23
21054	Gambrills	103.68
21056	Gibson Island	0
21060	Glen Burnie (East)	280.60
21061	Glen Burnie (West)	306.42
21076*	Hanover	215.52
21077	Harmans	---
21090	Linthicum Heights	137.98
21108	Millersville	119.68
21113	Odenton	177.23
21114	Crofton	81.27
21122	Pasadena	153.53
21140	Riva	---
21144	Severn	186.61
21146	Severna Park	119.83
21225*	Brooklyn	1,011.68
21226*	Curtis Bay	581.79
21401	Annapolis	254.08
21402	Naval Academy	0
21403	Eastport	227.96
21405	Sherwood Forest	0
21409	Annapolis	79.74
	Anne Arundel County	196.04

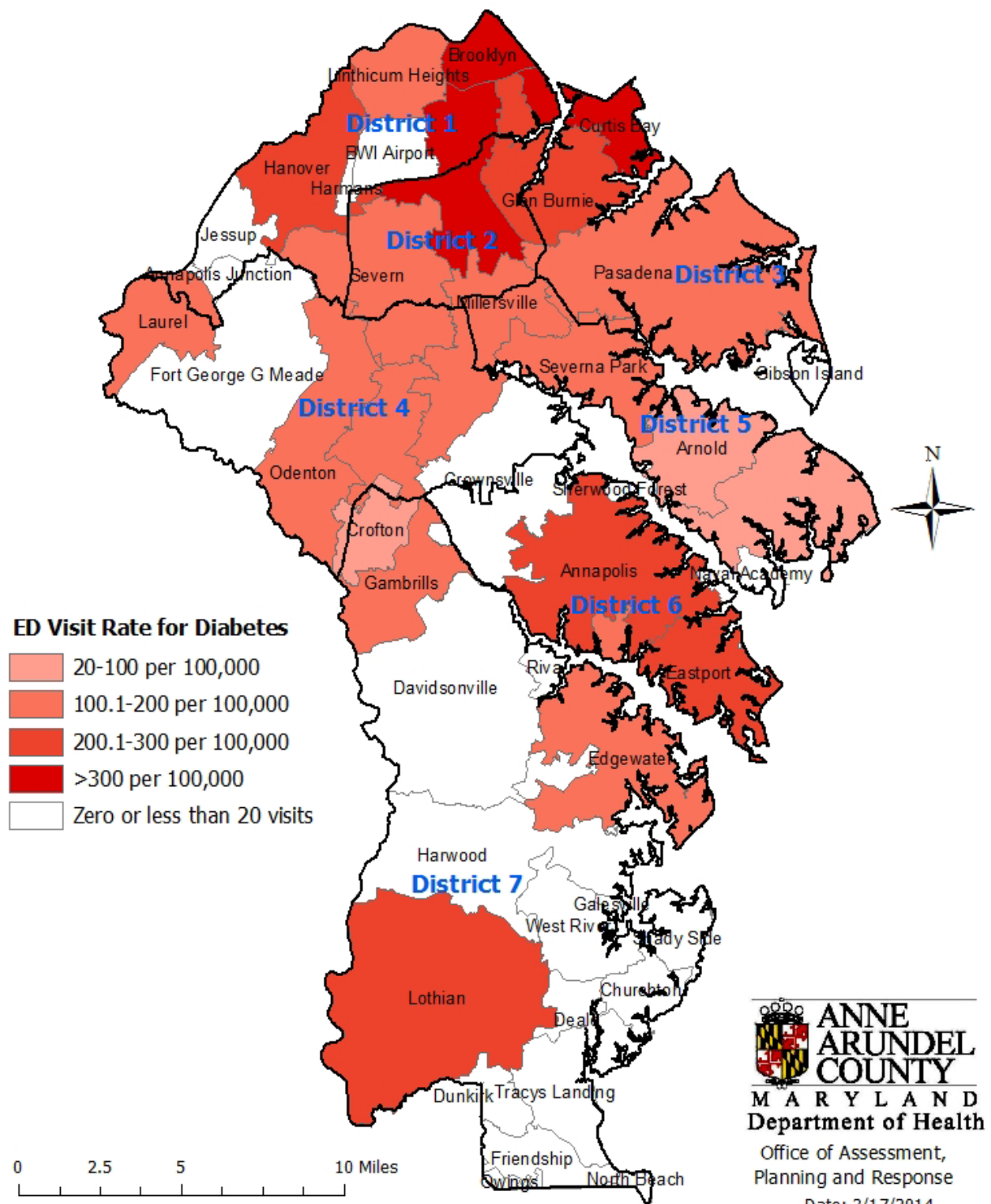
* ZIP Codes are shared with other Counties; data and rates are for Anne Arundel County only.

**Calculated using 2010 U.S. Census population; partial ZIP Code populations were estimated by Maryland Dept. of Planning.

---- Rates were not calculated for counts <20.

Data Source: Maryland Health Services Cost Review Commission.

ED Visit Rate for Diabetes per 100,000 Population by ZIP Code, Anne Arundel County, July 2009-June 2011 (2 years)



**Emergency Department Visit for Hypertension, per 100,000 Population,
Anne Arundel County, July 2009 -June 2011 (2 years)**

ZIP Code	Name	Hypertension
20701*	Annapolis Junction	0
20711	Lothian	248.38
20714*	North Beach	0
20724	Laurel	152.24
20733	Churchton	---
20736*	Owings	---
20751	Deale	---
20754*	Dunkirk	0
20755	Ft. Meade	---
20758	Friendship	---
20764	Shady Side	---
20765	Galesville	---
20776	Harwood	---
20778	West River	---
20779	Tracys Landing	---
20794*	Jessup	---
21012	Arnold	86.79
21032	Crownsville	113.02
21035	Davidsonville	---
21037	Edgewater	121.25
21054	Gambrills	133.31
21056	Gibson Island	0.00
21060	Glen Burnie (East)	219.01
21061	Glen Burnie (West)	219.80
21076*	Hanover	125.30
21077	Harmans	---
21090	Linthicum Heights	168.64
21108	Millersville	100.20
21113	Odenton	126.36
21114	Crofton	87.22
21122	Pasadena	105.65
21140	Riva	---
21144	Severn	205.43
21146	Severna Park	74.89
21225*	Brooklyn	738.91
21226*	Curtis Bay	396.11
21401	Annapolis	267.97
21402	Naval Academy	---
21403	Eastport	198.22
21405	Sherwood Forest	---
21409	Annapolis	82.24
	Anne Arundel County	166.09

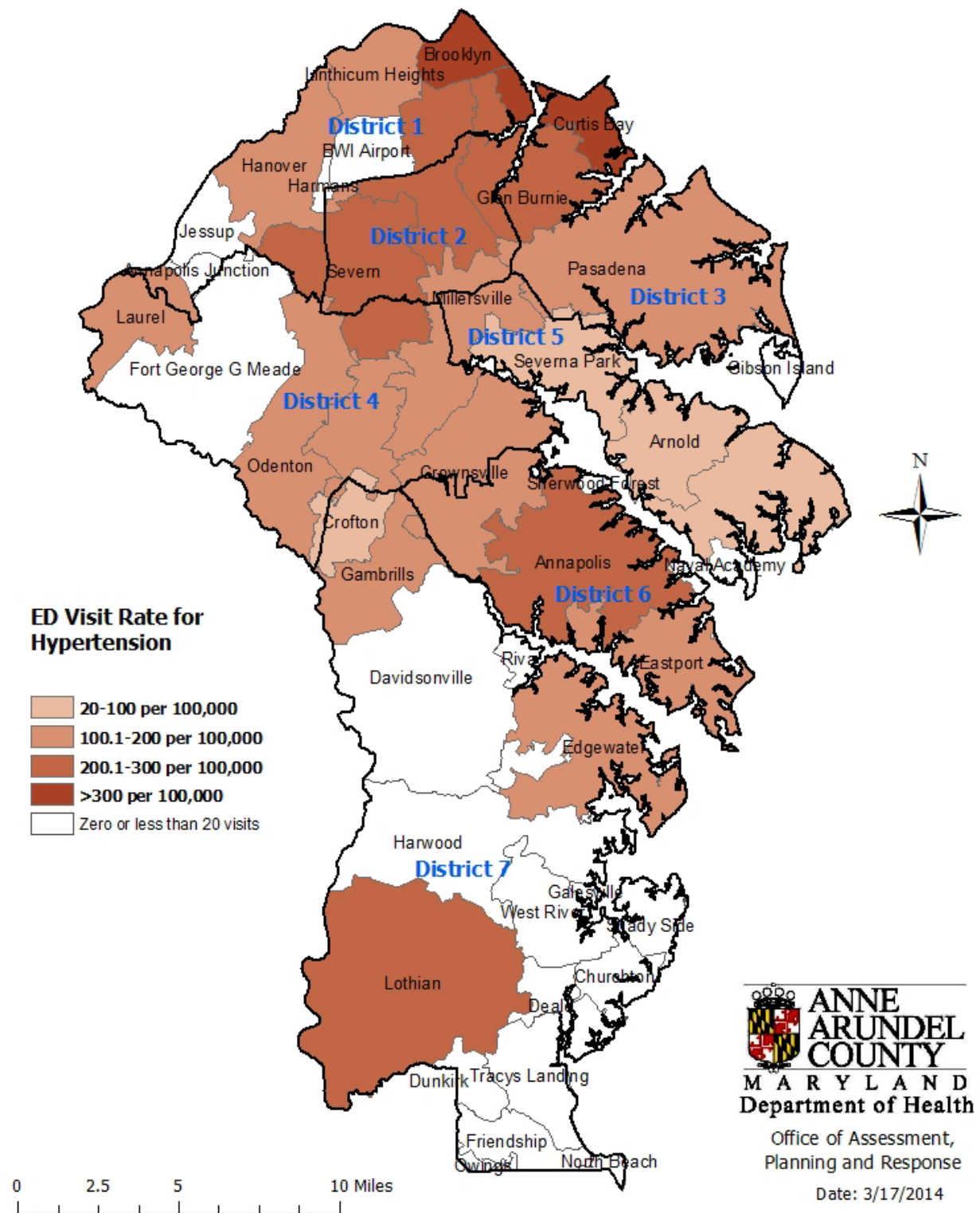
* ZIP Codes are shared with other Counties; data and rates are for Anne Arundel County only.

**Calculated using 2010 U.S. Census population; partial ZIP Code populations were estimated by Maryland Dept. of Planning.

---- Rates were not calculated for counts <20.

Data Source: Maryland Health Services Cost Review Commission.

ED Visit Rate for Hypertension per 100,000 Population by ZIP Code, Anne Arundel County, July 2009-June 2011(2 years)



**All Cancer Sites Crude Incidence Rate per 100,000 Population by ZIP Code,
Anne Arundel County, 2006-2010**

ZIP Code	Name	All Cancer Sites Incidence Rate
20701*	Annapolis Junction	---
20711	Lothian	599.1
20714*	North Beach	---
20724	Laurel	290.8
20733	Churchton	681.1
20736*	Owings	---
20751	Deale	734.1
20754*	Dunkirk	316.9
20755	Ft. Meade	98.9
20758	Friendship	---
20764	Shady Side	531.6
20765	Galesville	---
20776	Harwood	675.0
20778	West River	497.8
20779	Tracys Landing	626.1
20794*	Jessup	180.5
21012	Arnold	536.7
21032	Crownsville	569.6
21035	Davidsonville	614.2
21037	Edgewater	530.6
21054	Gambrills	503.6
21056	Gibson Island	---
21060	Glen Burnie (East)	563.9
21061	Glen Burnie (West)	474.3
21076*	Hanover	391.0
21077	Harmans	---
21090	Linthicum Heights	554.0
21108	Millersville	484.3
21113	Odenton	317.0
21114	Crofton	383.0
21122	Pasadena	481.7
21140	Riva	682.7
21144	Severn	396.4
21146	Severna Park	597.6
21225*	Brooklyn	916.8
21226*	Curtis Bay	396.1
21401 & 21409	Annapolis	**623.8
21402	Naval Academy	---
21403	Eastport	590.7
21405	Sherwood Forest	---
	Anne Arundel County	491.3

* ZIP Codes are shared with other Counties; data and rates are for Anne Arundel County only.

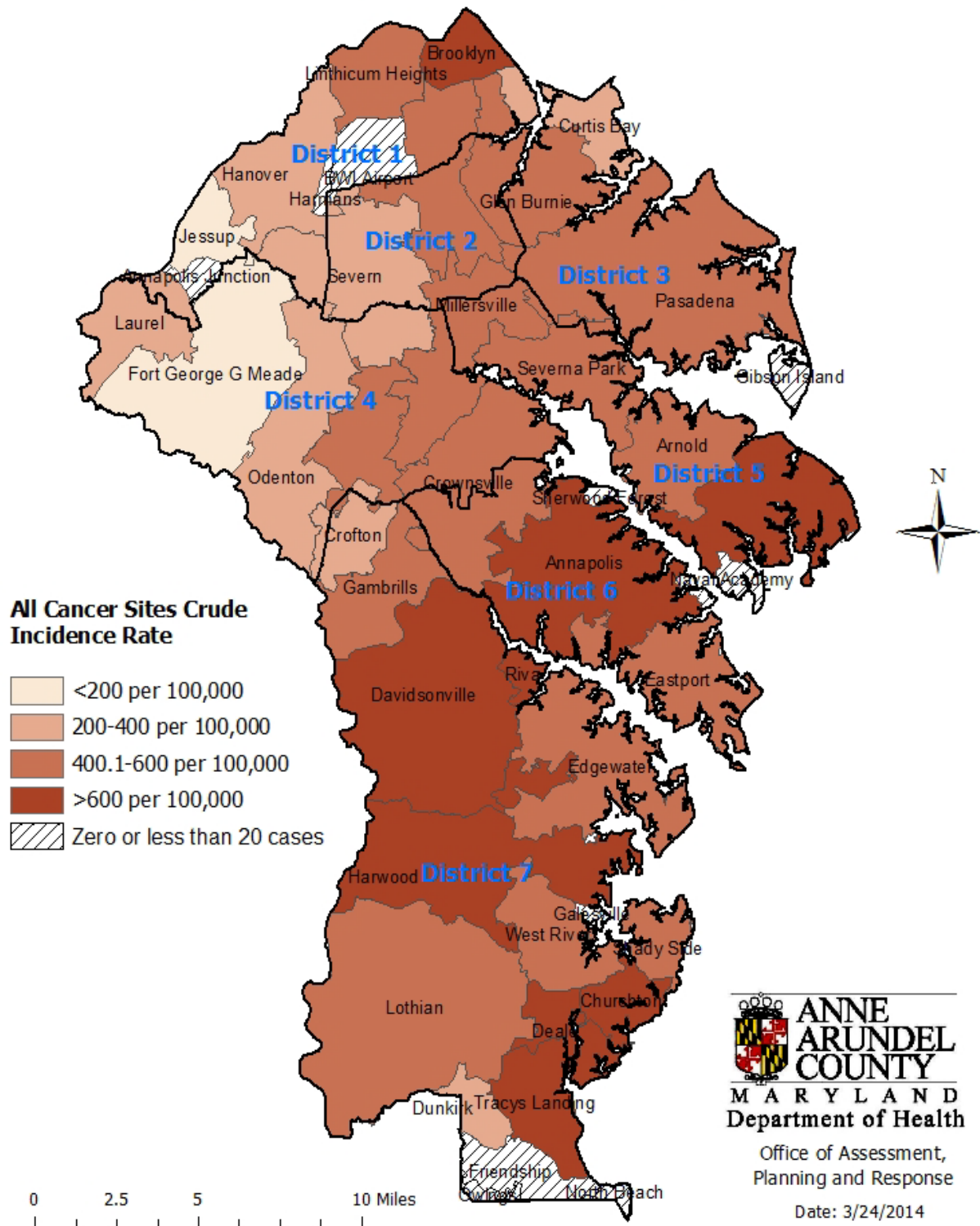
** Rate is calculated by combining ZIP Codes 21401 and 21409.

---- Rates were not calculated for counts <20.

Data Source: Maryland Cancer Registry, Maryland Department of Health and Mental Hygiene (DHMH).

Rates calculated using 2010 Census population.

All Cancer Sites Crude Incidence Rate per 100,000 Population by ZIP Code, Anne Arundel County, 2006-2010



Data Source: Maryland Cancer Registry, Maryland DHMH

**Lung Cancer Crude Incidence Rate per 100,000 Population by ZIP Code,
Anne Arundel County, 2006-2010**

ZIP Code	Name	Lung Cancer Incidence Rate
20701*	Annapolis Junction	---
20711	Lothian	117.4
20714*	North Beach	---
20724	Laurel	29.8
20733	Churchton	---
20736*	Owings	---
20751	Deale	---
20754*	Dunkirk	---
20755	Ft. Meade	---
20758	Friendship	---
20764	Shady Side	---
20765	Galesville	---
20776	Harwood	---
20778	West River	---
20779	Tracys Landing	---
20794*	Jessup	---
21012	Arnold	53.5
21032	Crownsville	61.0
21035	Davidsonville	66.5
21037	Edgewater	80.5
21054	Gambrills	71.1
21056	Gibson Island	---
21060	Glen Burnie (East)	112.2
21061	Glen Burnie (West)	96.5
21076*	Hanover	46.1
21077	Harmans	---
21090	Linthicum Heights	85.9
21108	Millersville	62.3
21113	Odenton	38.7
21114	Crofton	42.0
21122	Pasadena	77.3
21140	Riva	---
21144	Severn	57.1
21146	Severna Park	67.4
21225*	Brooklyn	187.7
21226*	Curtis Bay	---
21401 & 21409**	Annapolis	82.4
21402	Naval Academy	---
21403	Eastport	64.1
21405	Sherwood Forest	---
	Anne Arundel County	70.9

* ZIP Codes are shared with other Counties; data and rates are for Anne Arundel County only.

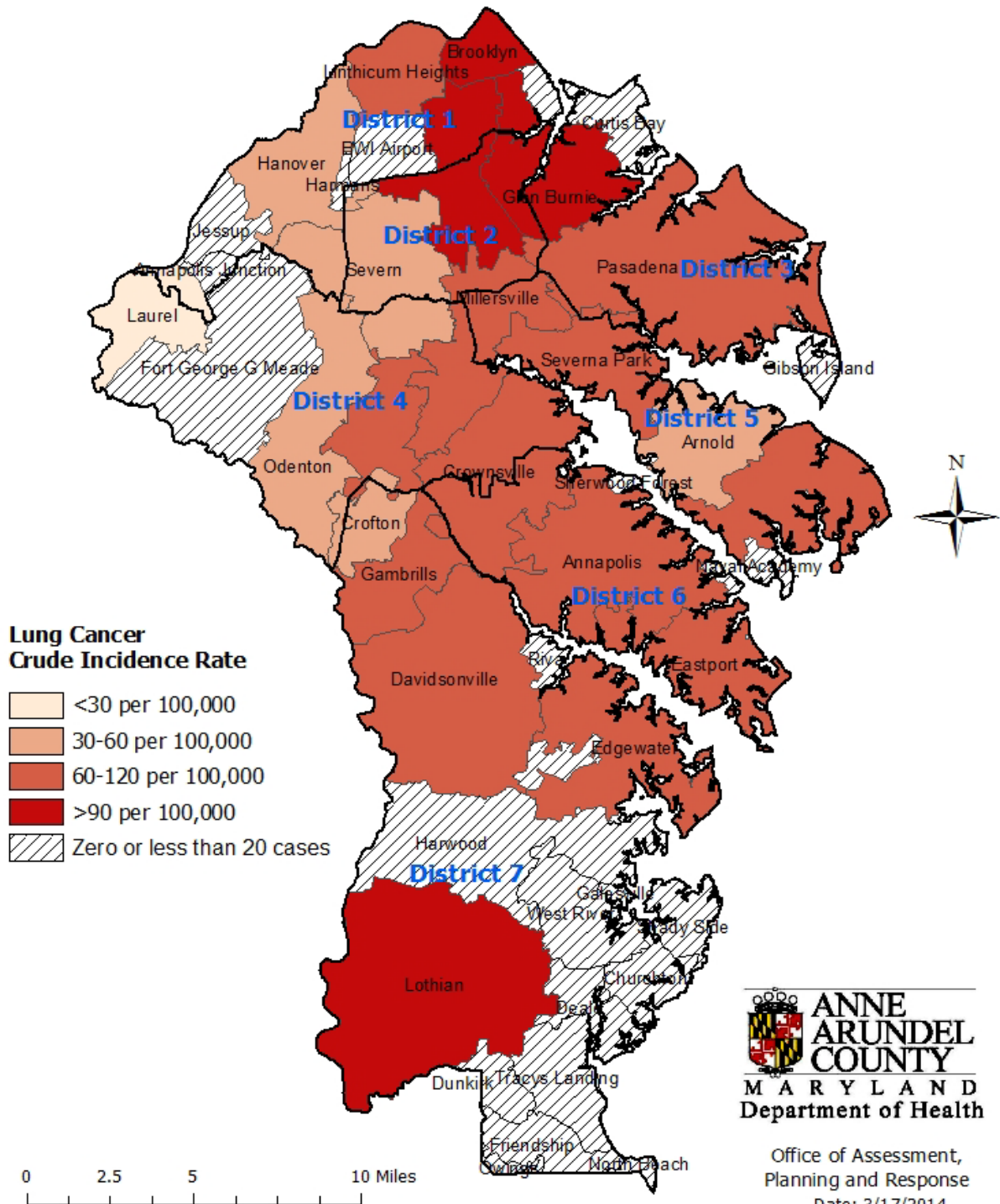
** Rate is calculated by combining ZIP Codes 21401 and 21409.

---- Rates were not calculated for counts <20.

Data Source: Maryland Cancer Registry, Maryland Department of Health and Mental Hygiene (DHMH).

Rates calculated using 2010 Census population.

Lung Cancer Crude Incidence Rate per 100,000 Population by ZIP Code, Anne Arundel County, 2007-2011



HIV

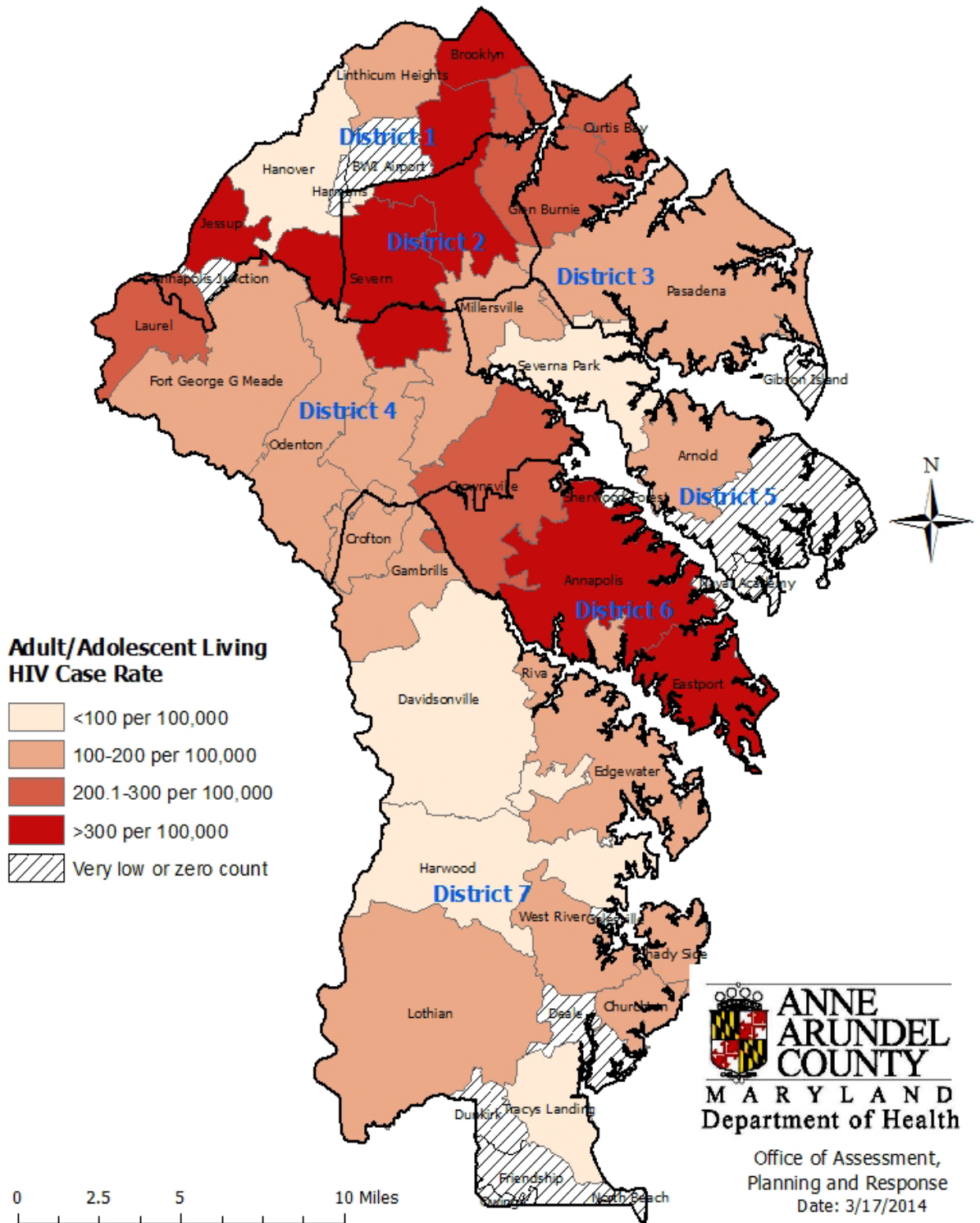
**Adult/Adolescent Living HIV Cases and Rate per 100,000 Population by ZIP Code,
Anne Arundel County, 2010**

ZIP Code	Name	Number of HIV Cases	HIV Rate per 100,000
20701*	Annapolis Junction	---	---
20711	Lothian	11	195.7
20714*	North Beach	---	---
20724	Laurel	35	266.6
20733	Churchton	4	177.5
20736*	Owings	0	0
20751	Deale	0	0
20754*	Dunkirk	---	---
20755	Ft. Meade	10	157.9
20758	Friendship	0	0
20764	Shady Side	5	142.7
20765	Galesville	---	---
20776	Harwood	1	35.9
20778	West River	2	118.1
20779	Tracys Landing	1	99.2
20794*	Jessup	20	320.1
21012	Arnold	21	118.5
21032	Crownsville	18	239.5
21035	Davidsonville	2	30.7
21037	Edgewater	23	133.1
21054	Gambrills	12	142.5
21056	Gibson Island	0	0
21060	Glen Burnie (East)	57	229.9
21061	Glen Burnie (West)	156	348.9
21076*	Hanover	9	95.2
21077	Harmans	---	---
21090	Linthicum Heights	12	141.9
21108	Millersville	22	149.5
21113	Odenton	38	154.3
21114	Crofton	26	128
21122	Pasadena	71	140.3
21140	Riva	3	104.3
21144	Severn	85	331.5
21146	Severna Park	20	91.1
21225*	Brooklyn	100	829.9
21226*	Curtis Bay	9	254.2
21401	Annapolis	144	463.4
21402	Naval Academy	0	0
21403	Eastport	99	384.7
21405	Sherwood Forest	---	---
21409	Annapolis	0	0
	Anne Arundel County	1,044	233.2

Data Source: Anne Arundel County HIV/AIDS Epidemiological Profile, Fourth Quarter, 2011, Maryland Department of Health and Mental Hygiene (DHMH).

* ZIP Codes are shared with other Counties; data and rates are for Anne Arundel County only.

Adult/Adolescent Living HIV Case Rate per 100,000 Population by ZIP Code, Anne Arundel County, 2010



Source: Anne Arundel County HIV/AIDS Epidemiological Profile, 2011, Maryland DHMH

Appendix

Disorders included in Behavioral Health Condition

1. Adjustment disorders
2. Anxiety disorders
3. Attention-deficit, conduct and disruptive behavior disorders
4. Delirium, dementia, and amnestic and other cognitive disorders
5. Developmental disorders
6. Disorders usually diagnosed in infancy, childhood or adolescence
7. Impulse control disorders
8. Mood disorders
9. Personality disorders
10. Schizophrenia and other psychotic disorders
11. Alcohol-related disorders
12. Substance-related disorders

Acknowledgements

Compiled by:

Bikash Singh, M.P.H.

Editorial Assistance provided by:

Jinlene Chan, M.D., M.P.H.

Laurie Fetterman, M.S.W.

Elin Jones, M.S.

Joseph Pate

Antigone Vickery, M.P.H.

Special Thanks to:

Thomas Burja